



Co-funded by the
Erasmus+ Programme
of the European Union

RERURAL PROJECT GROUP WORKS IN TURKEY OUTPUT



Renovation Models for Rural Tourism Destinations with Youth

2021-2-TR01-KA210-YOU-000050325



"The European Commission's support for the production of this publication does not constitute an endorsement of the contents, which reflect the views only of the authors, and the Commission cannot be held responsible for any use which may be made of the information contained therein."



Co-funded by the
Erasmus+ Programme
of the European Union

CONTENTS

About Rerural.....	1
Group Works in Turkey.....	2
İnönü.....	6
İnönü SWOT Analysis.....	7
İnönü Solutions.....	8
Oklubalı Castle.....	10
Oklubalı Castle. SWOT Analysis.....	11
Oklubalı Castle. Solutions.....	12
Sivrihisar.....	13
Sivrihisar SWOT Analysis.....	14
Sivrihisar Solutions.....	15
Ballıhisar.....	18
Ballıhisar SWOT Analysis.....	19
Ballıhisar Solutions.....	20
Learning Outcomes.....	22
Event Poster.....	24

2021-2-TR01-KA210-YOU-000050325



"The European Commission's support for the production of this publication does not constitute an endorsement of the contents, which reflect the views only of the authors, and the Commission cannot be held responsible for any use which may be made of the information contained therein."



Co-funded by the Erasmus+ Programme of the European Union

About Rerural

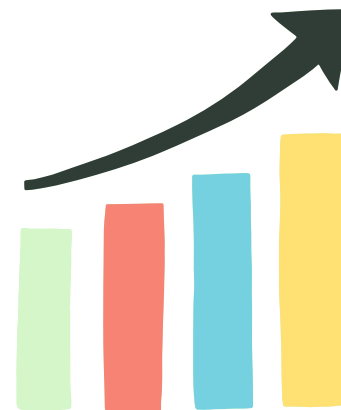
Our project endeavors to delve into the intricacies of implementation problems stemming from the restoration and tourism activities associated with cultural heritage items in rural areas. We recognize the multifaceted challenges these activities pose and seek to unravel them through a comprehensive analysis. The Rerural project's focus extends beyond mere identification; we aim to foster collaboration between our students and local administrations, who play pivotal roles as policymakers in the realm of cultural heritage preservation and rural tourism.



The Rerural Project aims to increase the professional competence needed by tourism and landscape architecture and try to develop new models and strategies and to identify the implementation problems that arise as a result of the restoration and tourism activities of cultural heritage items in rural areas.

Objectives

- Identification of Implementation Problems
- Collaborative Strategy Building
- Development of Applicable Models
- Focus on Cultural Elements
- Creation of a Restoration Strategy



The collaborative project involves three distinguished organizations representing Türkiye, Poland, and Slovakia. The strength of this international partnership lies in the diversity of expertise and perspectives brought forth by each participating organization.



"The European Commission's support for the production of this publication does not constitute an endorsement of the contents, which reflect the views only of the authors, and the Commission cannot be held responsible for any use which may be made of the information contained therein."

2021-2-TR01-KA210-YOU-000050325



Co-funded by the
Erasmus+ Programme
of the European Union

GROUP WORKS IN TURKEY



The Group Works in Türkiye event was held in Eskişehir, Türkiye between 18-20 April 2023. The event was attended by a total of 32 participants. 11 participants travelled from Poland and 11 participants travelled from Slovakia. 10 participants were selected locally. An interdisciplinary approach was adopted in group studies and the perspectives of tourism, landscape architecture and architecture departments were brought together.

2021-2-TR01-KA210-YOU-000050325

Objectives

1. Highlight Importance of Expertise
2. Link Discussions to Strategy
3. Diverse Background Integration
4. Focus on Problem-Solving
5. Collaborative Solutions Development
6. Utilize Insights from Field Visits
7. Interdisciplinary Collaboration
8. Practical Application of Recommendations
9. Continuous Feedback and Adjustment



"The European Commission's support for the production of this publication does not constitute an endorsement of the contents, which reflect the views only of the authors, and the Commission cannot be held responsible for any use which may be made of the information contained therein."



Co-funded by the
Erasmus+ Programme
of the European Union

GROUP WORKS IN TURKEY

Visiting Rural and Historical Areas

During the Group Works in Turkey event, attendees participated in immersive field trips to rural areas, gaining a direct understanding of the cultural, historical, and socio-economic elements that shape both the challenges and opportunities in these regions. These excursions allowed them to explore local villages, key landmarks, and sites of cultural significance deeply. This direct experience provided a deeper insight into the unique characteristics and preservation needs of rural communities, enhancing their grasp of the distinct nuances and dynamics specific to these areas.



2021-2-TR01-KA210-YOU-000050325



"The European Commission's support for the production of this publication does not constitute an endorsement of the contents, which reflect the views only of the authors, and the Commission cannot be held responsible for any use which may be made of the information contained therein."



Co-funded by the
Erasmus+ Programme
of the European Union

GROUP WORKS IN TURKEY

Visiting Rural and Historical Areas



2021-2-TR01-KA210-YOU-000050325



"The European Commission's support for the production of this publication does not constitute an endorsement of the contents, which reflect the views only of the authors, and the Commission cannot be held responsible for any use which may be made of the information contained therein."



Co-funded by the Erasmus+ Programme of the European Union

GROUP WORKS IN TURKEY

Group Works Sessions

At the heart of the event were the structured group work sessions, which served as the primary platform for participants to collaboratively address the pre-identified challenges and objectives. These sessions drew together a diverse group of professionals from tourism, architecture, and landscape architecture, creating a rich environment for brainstorming, problem-solving, and strategic planning.

Throughout these sessions, participants engaged in dynamic and productive discussions, integrating insights gleaned from their visits to rural areas and their interactions with local communities. This synergy of collective thinking and expertise created an ideal setting for the generation of innovative solutions. The group work sessions played a crucial role in fostering interdisciplinary collaboration, as each participant contributed their distinct skills and knowledge. This collaborative dynamic was essential in advancing the common goal of improving restoration practices in rural tourism destinations.



2021-2-TR01-KA210-YOU-000050325

The groups visited the rural areas of İnönü, Ballıhisar, Oklubalı and Sivrihisar and examined the works on rural tourism, landscaping and renovation.

They conducted group studies with the data obtained as a result of the examinations. Each group developed solutions with SWOT analysis, regional analysis, strategies and architectural designs for the rural destination of their choice.



"The European Commission's support for the production of this publication does not constitute an endorsement of the contents, which reflect the views only of the authors, and the Commission cannot be held responsible for any use which may be made of the information contained therein."



Co-funded by the
Erasmus+ Programme
of the European Union

İnönü



İnönü is a charming district located in the Eskişehir Province of Turkey, contributing to the cultural and historical tapestry of the region. Steeped in history, the district bears the name of İsmet İnönü, the second President of Turkey and a prominent figure in the country's modern history. İnönü District derives its name from the Turkish word "in," meaning cave, which is aptly fitting as it boasts ancient and natural caves dating back to the Byzantine era. These caves not only hold historical significance but are also of great interest to geologists, making İnönü an intriguing destination for those fascinated by geological exploration. For trekking enthusiasts, the region offers captivating trails that meander through these ancient caverns.

2021-2-TR01-KA210-YOU-000050325

All information about the region was compiled in the group study. Analyzes were primarily made with the information obtained as a result of the observation. Solutions were then produced with the resulting SWOT analysis results. The results were presented and reported by the group.



"The European Commission's support for the production of this publication does not constitute an endorsement of the contents, which reflect the views only of the authors, and the Commission cannot be held responsible for any use which may be made of the information contained therein."



Co-funded by the Erasmus+ Programme of the European Union

İnönü

Strengths

- *Secured Fundin
- *Emphasis on Traditional Values
- *Thermal Pools

Weaknesses

- *Accommodation Shortage
- *Information Deficiency
- *Limited Souvenir Availability



Opportunities

- *Abundant Natural Resources
- *Strategic Location
- *Tourist Attractions

Threats

- *Uncertain Future Funding
- *Competition with Nearby Destinations
- *Infrastructure Challenges



"The European Commission's support for the production of this publication does not constitute an endorsement of the contents, which reflect the views only of the authors, and the Commission cannot be held responsible for any use which may be made of the information contained therein."

2021-2-TR01-KA210-YOU-000050325



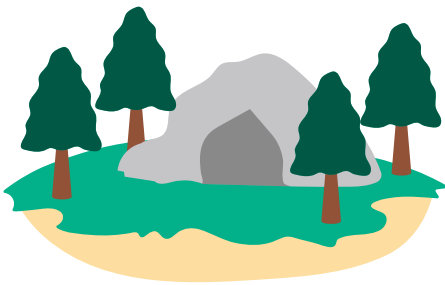
Co-funded by the Erasmus+ Programme of the European Union

İnönü Solutions



Tourist Routes: Establish two distinct tourist routes leading to the Mosque—one focusing on nature and the other on cultural highlights. Create a scenic path that guides tourists through picturesque natural landscapes, incorporating local flora and fauna. Install informative signages about the region's biodiversity, offering an immersive experience in İnönü's natural beauty. Develop a cultural route that highlights historical and cultural landmarks leading to the Mosque. Install interpretative panels along the route, providing insights into the rich heritage, traditions, and significant events associated with İnönü.

Landscaping and Beautification: Enhance the visual appeal of the routes by implementing landscaping and beautification initiatives. Plant native trees, flowers, and create well-maintained pathways, contributing to a pleasant and harmonious journey.



Building Fence and Platform: Install a transparent fence under the caves to provide safety while allowing visitors to enjoy an unobstructed view. Construct a platform for a better vantage point, enhancing the overall experience.



"The European Commission's support for the production of this publication does not constitute an endorsement of the contents, which reflect the views only of the authors, and the Commission cannot be held responsible for any use which may be made of the information contained therein."

2021-2-TR01-KA210-YOU-000050325



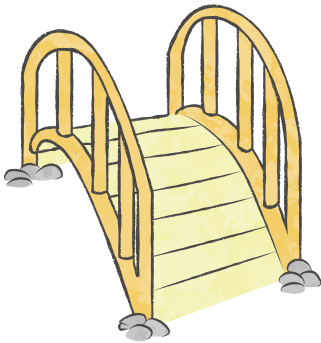
Co-funded by the
Erasmus+ Programme
of the European Union

İnönü Solutions



QR Code Integration: Integrate QR codes on the information board, allowing visitors to access additional online resources, virtual tours, or detailed historical information using their smartphones. This enhances the educational experience and accommodates different learning preferences.

Thermal Aquapark: Develop a state-of-the-art aquapark within the Thermal Park, utilizing the natural thermal water as a unique attraction. Incorporate various water slides, pools, and relaxation areas, ensuring a memorable experience for visitors seeking both recreation and wellness.



Thermal Bridge Transformation: Redesign the bridge leading to the camping area to create an aesthetically pleasing entrance. Incorporate elements that reflect the natural surroundings and thermal theme, enhancing the overall ambiance for visitors crossing the bridge.



"The European Commission's support for the production of this publication does not constitute an endorsement of the contents, which reflect the views only of the authors, and the Commission cannot be held responsible for any use which may be made of the information contained therein."

2021-2-TR01-KA210-YOU-000050325



Co-funded by the
Erasmus+ Programme
of the European Union

Oklubalı



2021-2-TR01-KA210-YOU-000050325

Oklubalı İnönü Trees stand as magnificent natural wonders, with a legacy spanning over 400 years. Among these ancient trees, the tallest reaches an impressive height of 6.5 meters, a testament to the enduring strength and resilience of these remarkable specimens. Each tree bears its own distinct name, adding a touch of individuality and character to this awe-inspiring grove. As living witnesses to centuries of history, the Oklubalı İnönü Trees invite visitors to connect with nature and marvel at the passage of time encapsulated in their enduring presence.

All information about the region was compiled in the group study. Analyzes were primarily made with the information obtained as a result of the observation. Solutions were then produced with the resulting SWOT analysis results. The results were presented and reported by the group.



"The European Commission's support for the production of this publication does not constitute an endorsement of the contents, which reflect the views only of the authors, and the Commission cannot be held responsible for any use which may be made of the information contained therein."



Co-funded by the Erasmus+ Programme of the European Union

Oklubalı

Strengths

- *Rich cultural heritage
- *Strategic location
- *Road to Istanbul

Weaknesses

- *Small Place
- *Factory:
- *Lack of Services:



Opportunities

- *Nature
- *Mountains
- *Village

Threats

- *Dust
- *Polluted Environment
- *Noise (Road & Factory)

2021-2-TR01-KA210-YOU-000050325

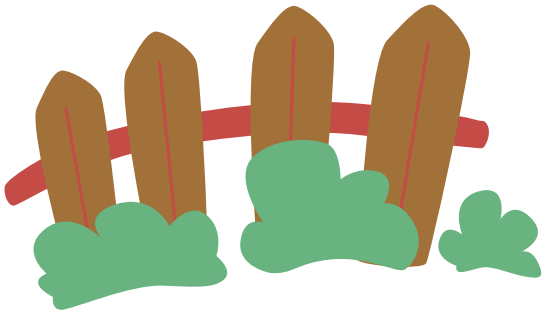


"The European Commission's support for the production of this publication does not constitute an endorsement of the contents, which reflect the views only of the authors, and the Commission cannot be held responsible for any use which may be made of the information contained therein."



Co-funded by the Erasmus+ Programme of the European Union

Oklubalı Solutions



The Green Wall Project: To create a sustainable and aesthetically pleasing barrier against wind, storms, and factory pollution while enhancing the overall visual appeal of the area. Implement a green wall composed of resilient, wind-resistant plant species strategically placed to act as a natural buffer against strong winds and storms. This will help protect the surrounding environment and the designated project area.

Accommodation Capsules Project: Collaborate with architects specializing in eco-friendly designs to create accommodation capsules that blend seamlessly with the natural surroundings. Implement sustainable materials, energy-efficient systems, and eco-conscious technologies.



Oklubalı Trees Memorial Capsules Project: In the heart of Oklubalı village, the ancient Oklubalı Trees stand as majestic witnesses to centuries of history and natural beauty. The Oklubalı Trees Memorial Capsules Project seeks to immortalize the legacy of these remarkable trees and the stories they hold within their rings.



"The European Commission's support for the production of this publication does not constitute an endorsement of the contents, which reflect the views only of the authors, and the Commission cannot be held responsible for any use which may be made of the information contained therein."

2021-2-TR01-KA210-YOU-000050325



Co-funded by the Erasmus+ Programme of the European Union

Sivrihisar



Sivrihisar, nestled in the northwest of Eskisehir Province in Turkey, is a town with a rich historical tapestry and natural beauty. Steeped in ancient history, Sivrihisar features landmarks such as the Sivrihisar Castle, an Ottoman-era Grand Mosque, and a local museum preserving artifacts from its diverse past. The town's economy thrives on agriculture, with fertile lands supporting the cultivation of crops and sustaining a vibrant carpet and rug weaving industry. Sivrihisar is not only a place of historical significance but also a community that celebrates its cultural heritage through various festivals and events. Accessible by road and well-connected to Eskisehir, Sivrihisar offers visitors a glimpse into traditional Turkish life, with local cuisine, warm community ties, and a landscape adorned with fields and mountains.

2021-2-TR01-KA210-YOU-000050325

All information about the region was compiled in the group study. Analyzes were primarily made with the information obtained as a result of the observation. Solutions were then produced with the resulting SWOT analysis results. The results were presented and reported by the group.



"The European Commission's support for the production of this publication does not constitute an endorsement of the contents, which reflect the views only of the authors, and the Commission cannot be held responsible for any use which may be made of the information contained therein."



Co-funded by the Erasmus+ Programme of the European Union

Sivrihisar

Strengths

- *Historical Heritage
- *Agricultural Prosperity
- *Cultural Festivals
- *Community Ties
- *Rich Natural Environment
- *Tourist-Focused Community
- *Effective Renovations

Weaknesses

- *Limited Tourism Infrastructure
- *Language Barrier
- *Poor Renovation of Churches
- *Lack of English-Speaking Guides
- *Accessibility Challenges



Opportunities

- *Tourism Development.
- *Culinary Tourism
- *Sustainable Agriculture
- *Cittaslow Designation
- *Cable Car Installation

Threats

- *Economic Dependence
- *Overcommercialization.
- *Competition from Nearby Destinations
- *Environmental Concerns
- *Tourist Overcrowding



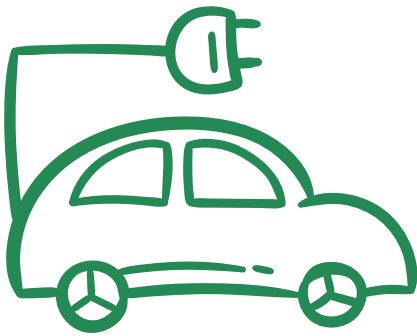
"The European Commission's support for the production of this publication does not constitute an endorsement of the contents, which reflect the views only of the authors, and the Commission cannot be held responsible for any use which may be made of the information contained therein."

2021-2-TR01-KA210-YOU-000050325



Co-funded by the Erasmus+ Programme of the European Union

Sivrihisar Solutions



Electrical Cars: Expanding the fleet of electrical cars to enhance city accessibility, making it more convenient for both locals and tourists. Introducing charging stations strategically located throughout the city to support the increased use of electric vehicles.

Greenery Benches with Landscape Design:

Implementing landscape design for benches to provide aesthetically pleasing and comfortable seating areas with greenery, contributing to a more inviting urban environment. Placing these benches strategically in public spaces, parks, and recreational areas to promote relaxation and community engagement.



QR Codes for Touristic Information: Integrating QR codes for touristic information at key locations, providing visitors with instant access to relevant details about historical sites, attractions, and local services. Developing a user-friendly mobile application to complement QR code information, offering interactive maps and guided tours.



"The European Commission's support for the production of this publication does not constitute an endorsement of the contents, which reflect the views only of the authors, and the Commission cannot be held responsible for any use which may be made of the information contained therein."

2021-2-TR01-KA210-YOU-000050325



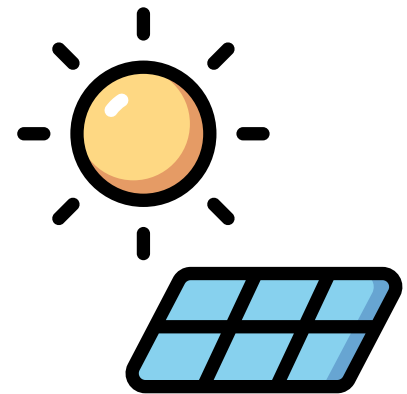
Co-funded by the Erasmus+ Programme of the European Union

Sivrihisar Solutions



Multifunctional Doghouse: Introducing greenery on the roofs of doghouses to reduce temperatures and create a more comfortable environment for animals. Collaborating with local artisans for unique and aesthetically pleasing doghouse designs that reflect the cultural identity of Sivrihisar.

Green Panels: Incorporating green panels on walls to prevent damages and contribute to environmental sustainability. Utilizing local materials in the construction of green panels, aligning with the town's commitment to preserving its cultural heritage.



Mobile Flower Boxes: Implementing flower boxes on wheels with a slim construction, allowing for flexibility in placement and creating movable green spaces. Encouraging community participation by involving locals in the care and design of these mobile flower boxes.



"The European Commission's support for the production of this publication does not constitute an endorsement of the contents, which reflect the views only of the authors, and the Commission cannot be held responsible for any use which may be made of the information contained therein."

2021-2-TR01-KA210-YOU-000050325



Co-funded by the Erasmus+ Programme of the European Union

Ballıhisar



Ballıhisar, also known historically as Pessinus, is an ancient city with rich historical and cultural significance located in modern-day Turkey. The city is renowned for its historical importance, especially as the ancient city of Pessinus, associated with religious practices and mythology. Pessinus was known for its Temple of Cybele, an ancient Phrygian mother goddess. The city held religious significance, and the temple attracted pilgrims from various regions. Ballıhisar, with its historical roots, cultural significance, and natural beauty, holds tremendous potential as a tourist destination. Strategic initiatives focusing on accessibility, diverse offerings, and effective marketing can contribute to the region's tourism growth and preservation of its unique heritage.

2021-2-TR01-KA210-YOU-000050325

All information about the region was compiled in the group study. Analyzes were primarily made with the information obtained as a result of the observation. Solutions were then produced with the resulting SWOT analysis results. The results were presented and reported by the group.



"The European Commission's support for the production of this publication does not constitute an endorsement of the contents, which reflect the views only of the authors, and the Commission cannot be held responsible for any use which may be made of the information contained therein."



Co-funded by the Erasmus+ Programme of the European Union

Sivrihisar

Strengths

- *Archaeological Sites
- *Nature Tourism
- *Proof of Original Settlement
- *Rich Historical Heritage
- *Local Traditional Crafts

Weaknesses

- *Constitutional Restrictions
- *Limited Accessibility
- *Information in Multiple Languages
- *Underdeveloped Tour Routes
- *Educational Signage



Opportunities

- *Tourist Attraction
- *Cultural Rise
- *Education of History
- *Cultural Exchange Programs
- *Eco-Tourism Focus

Threats

- *Progress in Construction
- *Damages and Loss of Cultural Heritage
- *Competing Tourist Destinations
- *Natural Disasters



"The European Commission's support for the production of this publication does not constitute an endorsement of the contents, which reflect the views only of the authors, and the Commission cannot be held responsible for any use which may be made of the information contained therein."

2021-2-TR01-KA210-YOU-000050325



Co-funded by the Erasmus+ Programme of the European Union

Ballıhisar Solutions



Infrastructure Enhancement: Invest in improving the infrastructure, particularly roads leading to Ballıhisar Village and Pessinus Ancient City. Adequate parking spaces should be provided to accommodate visitors without causing congestion.

Signage and Accessibility: Install clear and informative signs to guide visitors to historical areas, facilities, and amenities. Ensure that the region becomes more accessible, especially for those with physical disabilities.



Cultural Promotion: Implement educational programs to raise awareness about the historical significance of Pessinus Ancient City. Collaborate with local schools and institutions to enhance the understanding of the area's cultural heritage.



"The European Commission's support for the production of this publication does not constitute an endorsement of the contents, which reflect the views only of the authors, and the Commission cannot be held responsible for any use which may be made of the information contained therein."

2021-2-TR01-KA210-YOU-000050325



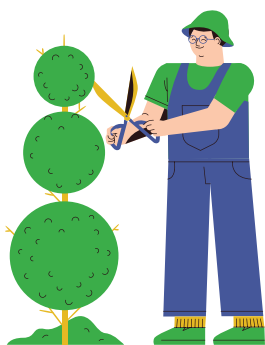
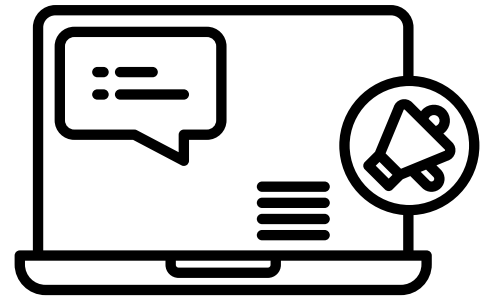
Co-funded by the Erasmus+ Programme of the European Union

Ballıhisar Solutions



Restoration and Conservation: Launch initiatives for the restoration and conservation of historical sites within Pessinus Ancient City. Collaborate with heritage preservation organizations to ensure the long-term protection of cultural assets.

Digital Presence: Develop a comprehensive online presence, including a website and social media platforms, to disseminate information about Ballıhisar Village and Pessinus Ancient City. Utilize QR codes for on-site information.



Landscaping: Enhance the landscaping around the Pessinus Ancient City Museum, creating a more aesthetically pleasing environment. Consider incorporating outdoor resting areas and interactive exhibits.



"The European Commission's support for the production of this publication does not constitute an endorsement of the contents, which reflect the views only of the authors, and the Commission cannot be held responsible for any use which may be made of the information contained therein."

2021-2-TR01-KA210-YOU-000050325



Co-funded by the
Erasmus+ Programme
of the European Union

Learning Outcomes

1. Cultural Competence:

- Participants developed cultural competence through interactions with international peers, gaining a deeper understanding of diverse perspectives in the fields of tourism, architecture, and landscape architecture.

2. Interdisciplinary Collaboration:

- Attendees fostered interdisciplinary collaboration, learning to work effectively across various fields and contributing to the integration of tourism, architecture, and landscape architecture in cultural heritage preservation.

3. Project Alignment and Implementation:

- Participants understood the alignment of the Group Works in Poland event with the broader project's priorities and objectives, demonstrating the ability to connect theoretical knowledge with practical applications in restoration practices.

4. Local Engagement Skills:

- Those attending from the local community enhanced their skills in actively participating in regional initiatives, ensuring their voices were heard, and contributing valuable insights to the cultural heritage preservation efforts in Olsztyn.

5. Leadership and Mentorship Development:

- Faculty members serving as group leaders developed leadership and mentorship skills, guiding students and fostering a collaborative learning environment within the context of cultural heritage, tourism, and architecture.

6. Problem Identification and Solution Proposals:

- Participants enhanced their ability to identify implementation problems related to cultural heritage restoration and rural tourism, proposing innovative and applicable solutions in alignment with the project's goals.

7. Communication and Presentation Skills:

- Attendees refined their communication and presentation skills through active engagement in discussions, articulating ideas clearly, and effectively conveying the outcomes of the event to a broader audience.



"The European Commission's support for the production of this publication does not constitute an endorsement of the contents, which reflect the views only of the authors, and the Commission cannot be held responsible for any use which may be made of the information contained therein."

2021-2-TR01-KA210-YOU-000050325



Co-funded by the
Erasmus+ Programme
of the European Union

Learning Outcomes

10. Critical Thinking and Analysis:

- Participants engaged in critical thinking and analytical exercises, evaluating challenges and opportunities associated with cultural heritage preservation and rural tourism in a holistic manner.

11. Networking and Relationship Building:

- Attendees established valuable professional connections, building a network of peers, mentors, and collaborators that extended beyond the event and contributed to future collaborative endeavors.

12. Documentation and Dissemination:

- Participants gained experience in documenting key insights and outcomes, developing skills in knowledge dissemination through reports, presentations, or publications, contributing to the wider academic and professional community.

13. Civic Engagement and Social Responsibility:

- Attendees, especially those from the local community, strengthened their sense of civic engagement and social responsibility, recognizing their role in preserving cultural heritage and promoting sustainable tourism practices in their region.

14. Adaptability and Open-mindedness:

- Participants cultivated adaptability and open-mindedness, embracing different cultural norms and perspectives, and applied this understanding to their approach in addressing challenges related to cultural heritage and tourism.



"The European Commission's support for the production of this publication does not constitute an endorsement of the contents, which reflect the views only of the authors, and the Commission cannot be held responsible for any use which may be made of the information contained therein."

2021-2-TR01-KA210-YOU-000050325



Co-funded by the Erasmus+ Programme of the European Union

Event Poster



Co-funded by the Erasmus+ Programme of the European Union

RERURAL

GROUP WORKS IN TÜRKİYE

18-20 April, 2023

Eskişehir, Türkiye

2021-2-TR01-KA210-YOU-000050325



2021-2-TR01-KA210-YOU-000050325

Renovation Models for Rural Tourism Destinations with Youth



"The European Commission's support for the production of this publication does not constitute an endorsement of the contents, which reflect the views only of the authors, and the Commission cannot be held responsible for any use which may be made of the information contained therein."



"The European Commission's support for the production of this publication does not constitute an endorsement of the contents, which reflect the views only of the authors, and the Commission cannot be held responsible for any use which may be made of the information contained therein."