



Co-funded by the  
Erasmus+ Programme  
of the European Union

# RERURAL PROJECT INTERNATIONAL FOCUS GROUP WORK OUTPUT



## Renovation Models for Rural Tourism Destinations with Youth

2021-2-TR01-KA210-YOU-000050325



"The European Commission's support for the production of this publication does not constitute an endorsement of the contents, which reflect the views only of the authors, and the Commission cannot be held responsible for any use which may be made of the information contained therein."



Co-funded by the Erasmus+ Programme of the European Union

# CONTENTS

About Rerural.....	1
International Focus Group Work.....	2
Sustainability.....	4
Landscape Architecture.....	9
Tourism.....	13
Architecture.....	17
Accessibility.....	21
Non-Governmental.....	24
Local Governance.....	27
Event Poster.....	30

2021-2-TR01-KA210-YOU-000050325



"The European Commission's support for the production of this publication does not constitute an endorsement of the contents, which reflect the views only of the authors, and the Commission cannot be held responsible for any use which may be made of the information contained therein."



Co-funded by the  
Erasmus+ Programme  
of the European Union

## About Rerural

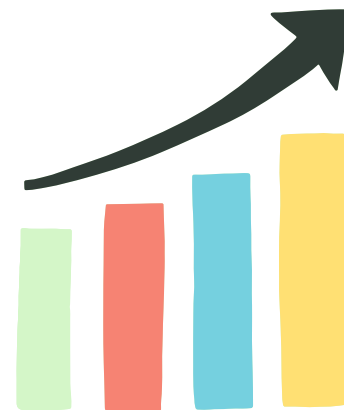
Our project endeavors to delve into the intricacies of implementation problems stemming from the restoration and tourism activities associated with cultural heritage items in rural areas. We recognize the multifaceted challenges these activities pose and seek to unravel them through a comprehensive analysis. The Rerural project's focus extends beyond mere identification; we aim to foster collaboration between our students and local administrations, who play pivotal roles as policymakers in the realm of cultural heritage preservation and rural tourism.



The Rerural Project aims to increase the professional competence needed by tourism and landscape architecture and try to develop new models and strategies and to identify the implementation problems that arise as a result of the restoration and tourism activities of cultural heritage items in rural areas.

### Objectives

- Identification of Implementation Problems
- Collaborative Strategy Building
- Development of Applicable Models
- Focus on Cultural Elements
- Creation of a Restoration Strategy



The collaborative project involves three distinguished organizations representing Türkiye, Poland, and Slovakia. The strength of this international partnership lies in the diversity of expertise and perspectives brought forth by each participating organization.



"The European Commission's support for the production of this publication does not constitute an endorsement of the contents, which reflect the views only of the authors, and the Commission cannot be held responsible for any use which may be made of the information contained therein."

2021-2-TR01-KA210-YOU-000050325



Co-funded by the  
Erasmus+ Programme  
of the European Union

# INTERNATIONAL FOCUS GROUP WORK



2021-2-TR01-KA210-YOU-000050325

The International Focus Group Study event, which is the closing event of the Rerural project carried out by the Faculty of Tourism under the coordination of Eskişehir Osmangazi University (ESOGÜ), was held with the participation of 100 people.

The closing event of the Rerural project, supported by the European Union and the Turkish National Agency, started on November 20, 2023. Representatives of different institutions and young people from Poland, Slovakia and Turkey attended the event. It continued until November 24, 2023. Group studies, field studies and activities were carried out at the event. Academicians, NGO representatives, institution representatives and students attended the event.

## Objectives

When selecting participants for the project, it's essential to align their expertise with the project's priorities and objectives, specifically focusing on the fields of tourism, architecture, and landscape architecture. This targeted selection ensures that each participant brings valuable insights and skills to the table, directly contributing to the project's core areas. The participants' expertise plays a crucial role in tackling the complex challenges associated with cultural heritage restoration and the development of rural tourism.



"The European Commission's support for the production of this publication does not constitute an endorsement of the contents, which reflect the views only of the authors, and the Commission cannot be held responsible for any use which may be made of the information contained therein."



Co-funded by the Erasmus+ Programme of the European Union

# INTERNATIONAL FOCUS GROUP WORKS



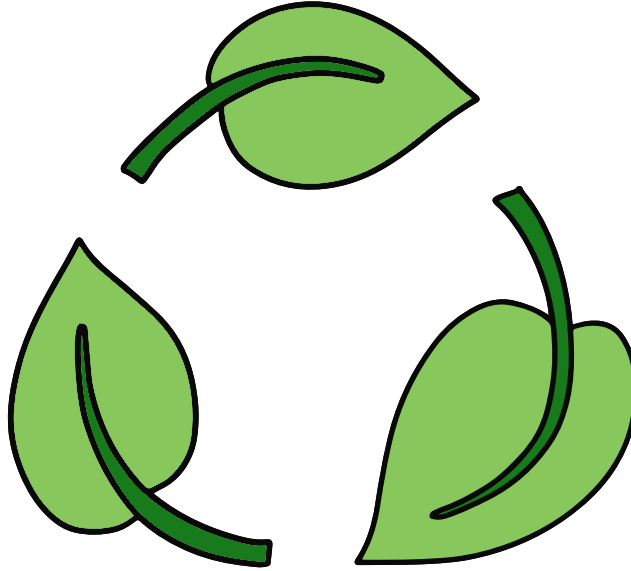
2021-2-TR01-KA210-YOU-000050325



"The European Commission's support for the production of this publication does not constitute an endorsement of the contents, which reflect the views only of the authors, and the Commission cannot be held responsible for any use which may be made of the information contained therein."



Co-funded by the  
Erasmus+ Programme  
of the European Union



# SUSTAINABILITY

2021-2-TR01-KA210-YOU-0000050325



"The European Commission's support for the production of this publication does not constitute an endorsement of the contents, which reflect the views only of the authors, and the Commission cannot be held responsible for any use which may be made of the information contained therein."



Co-funded by the  
Erasmus+ Programme  
of the European Union

## SOLUTION PROPOSALS FOR SUSTAINABILITY: UNDERSTANDING COMMUNITY NEEDS AND EXPECTATIONS

In tackling the sustainability challenges identified in rural renovation projects in Zanzibar, Tanzania, a pivotal solution revolves around recognizing and addressing the expectations and needs of the local community. This solution is designed to mitigate delays, control expenses, and ensure the long-term viability and quality of remodeling endeavors.

### Impact on Project Success:

The challenges inherent in rural renovation projects can have cascading effects, potentially causing delays, escalating expenses, and jeopardizing the overall success and sustainability of the projects. Understanding and meeting community needs and expectations emerge as a strategic avenue to counteract these challenges and enhance project outcomes.

### Recognizing Community Expectations:

The proposed solution centers on actively involving the local community in the decision-making processes related to renovation projects. By recognizing the expectations and needs of the community, it becomes possible to tailor solutions that align with regional preferences, ensuring that the projects are not only successful but also contribute positively to the community's well-being.

### Methodology: Involving the Community in Participatory Planning:

A participatory planning methodology is fundamental to understanding the nuanced needs and expectations of the community. Engaging the local population through community gatherings, workshops, and collaborative planning sessions facilitates a deeper and more comprehensive understanding of the unique requirements in the area. This participatory approach ensures that the voices of the community are heard and considered in shaping the trajectory of the renovation projects.



"The European Commission's support for the production of this publication does not constitute an endorsement of the contents, which reflect the views only of the authors, and the Commission cannot be held responsible for any use which may be made of the information contained therein."

2021-2-TR01-KA210-YOU-000050325



Co-funded by the  
Erasmus+ Programme  
of the European Union

### Benefit: Customized Solutions for Regional Success:

By actively involving the community in the planning process, a wealth of local knowledge and preferences can be harnessed. This, in turn, enables the development of customized solutions that address the specific needs and expectations of the region. These tailored solutions not only enhance project success but also contribute to heightened community satisfaction, fostering a sense of ownership and pride in the renovated structures.

In conclusion, understanding and incorporating community needs and expectations into rural renovation projects is a strategic and impactful solution. Through participatory planning and a commitment to regional customization, these endeavors can not only overcome sustainability challenges but also become catalysts for positive community development, ensuring that the outcomes resonate with the local population and contribute to the long-term flourishing of the region.

### Useful Techniques and Approaches:

Expanding on sustainable solutions, incorporating useful techniques and approaches becomes instrumental in addressing challenges in rural renovation projects in Zanzibar, Tanzania.

### Regional Resource Utilization:

Leveraging local resources ensures not only cost-effectiveness but also a sustainable integration of materials readily available in the region. Utilizing indigenous resources aligns with customary practices and contributes to the overall sustainability of the project.

### Customary Building Practices:

Embracing traditional building practices ensures cultural authenticity and strengthens the connection between the renovated structures and the community's heritage. This approach not only respects local customs but also enhances the durability and resilience of the renovated buildings.



"The European Commission's support for the production of this publication does not constitute an endorsement of the contents, which reflect the views only of the authors, and the Commission cannot be held responsible for any use which may be made of the information contained therein."

2021-2-TR01-KA210-YOU-000050325





Co-funded by the  
Erasmus+ Programme  
of the European Union

#### Modification of Contemporary Technology:

Adapting modern technology to align with local needs and conditions enhances project efficiency. Tailoring technological solutions ensures that advancements are not only relevant but also accessible, promoting sustainable development.

#### Benefits:

These techniques collectively lead to reduced expenses, guarantee cultural sensitivity, and contribute to the overall sustainability of the renovation projects. By harmonizing modernity with tradition, these approaches ensure that the renovated structures are not only resilient but also reflective of the community's identity.

#### Increasing Local Community Participation:

Recognizing the transformative power of community involvement, this solution proposal advocates for strategies to enhance local participation in the renovation process.

#### Forming Local Committees:

Establishing committees comprising local residents empowers the community to actively contribute to decision-making processes, fostering a sense of ownership and pride in the project.

#### Rewards for Participation:

Offering incentives or rewards for community participation encourages active involvement. This can range from recognition within the community to tangible benefits, creating a positive feedback loop of engagement.

#### Guaranteeing Transparency:

Transparency in decision-making and project progress builds trust within the community. Regular communication ensures that residents are informed and feel connected to the renovation efforts.



"The European Commission's support for the production of this publication does not constitute an endorsement of the contents, which reflect the views only of the authors, and the Commission cannot be held responsible for any use which may be made of the information contained therein."



Co-funded by the  
Erasmus+ Programme  
of the European Union

## Results

Increased community involvement leads to more pertinent and well-received outcomes. Residents become integral stakeholders, fostering a collective sense of pride in their communities and a commitment to the long-term success of the renovation projects.

### Improving Employment Prospects:

Recognizing the socioeconomic impact of renovation projects, this proposal focuses on strategies to enhance employment prospects within the local community.

### Supporting Local Suppliers:

Sourcing materials locally and supporting regional suppliers stimulates economic activity within the community, creating a positive ripple effect.

### Hiring Locally:

Prioritizing local hires not only contributes to job creation but also ensures that community members directly benefit from the economic opportunities presented by the renovation projects.

### Offering Training Programs:

Training programs aimed at imparting relevant skills to the local workforce contribute to the long-term sustainability of employment, empowering individuals with the expertise to participate in and lead future renovation initiatives.

### Adhering to Local Culture and Actions:

The preservation of cultural identity is paramount in successful rural renovation projects, necessitating a commitment to cultural sensitivity and collaboration with community leaders and experts.

### Ensuring Cultural Sensitivity:

Collaborating with cultural experts and community leaders ensures that traditional designs and practices are preserved and integrated into the renovation projects.



"The European Commission's support for the production of this publication does not constitute an endorsement of the contents, which reflect the views only of the authors, and the Commission cannot be held responsible for any use which may be made of the information contained therein."



Co-funded by the  
Erasmus+ Programme  
of the European Union



# LANDSCAPE ARCHITECTURE

2021-2-TR01-KA210-YOU-000050325



"The European Commission's support for the production of this publication does not constitute an endorsement of the contents, which reflect the views only of the authors, and the Commission cannot be held responsible for any use which may be made of the information contained therein."



Co-funded by the  
Erasmus+ Programme  
of the European Union

## CHALLENGES AND OPPORTUNITIES IN LANDSCAPE ARCHITECTURE

In the realm of landscape architecture, one of the foremost challenges faced is the inherent resistance to change among people. The reluctance to embrace new ideas often poses a significant hurdle to the implementation of innovative solutions that can enhance the quality of public spaces and the environment. However, within this challenge lies a promising opportunity for progress.

The resistance to change is a common phenomenon, and the NIMBY (Not In My Backyard) mindset is a pertinent issue that frequently surfaces in the field of landscape architecture. This mindset reflects a resistance to accepting new developments or changes in one's immediate surroundings, even if these changes are intended for the greater good. It is a complex challenge that necessitates a nuanced and strategic approach.

Addressing this issue requires a proactive and inclusive strategy that involves effective communication with local residents. Engaging in an open dialogue with the community can help bridge the gap between the proposed improvements and the concerns of the residents. By fostering a sense of shared ownership and collaboration, landscape architects can work towards building consensus and garnering support for their transformative ideas.

Community engagement is not merely a means to overcome resistance; it is also an invaluable tool for gaining insights into the unique needs and preferences of the local population. By actively involving residents in the design and decision-making processes, landscape architects can tailor their plans to align more closely with the community's aspirations, creating spaces that truly resonate with the people they serve.

Furthermore, communication initiatives can serve as educational platforms, dispelling misconceptions and fostering a deeper understanding of the potential benefits that landscape architecture projects can bring to a community. Emphasizing the positive impact on aesthetics, functionality, and overall well-being can contribute to shifting perceptions and garnering broader support.



"The European Commission's support for the production of this publication does not constitute an endorsement of the contents, which reflect the views only of the authors, and the Commission cannot be held responsible for any use which may be made of the information contained therein."

2021-2-TR01-KA210-YOU-000050325



Co-funded by the  
Erasmus+ Programme  
of the European Union

## CHALLENGES AND COMPLEXITIES IN URBAN SPRAWL AND LAND USE PLANNING

One of the pressing issues confronting towns and villages in close proximity to larger cities is the encroachment of urban sprawl, a phenomenon exacerbated by the influx of large industrial zones into these once serene areas. This unchecked expansion poses multifaceted challenges that demand thoughtful and comprehensive solutions, particularly in the context of land use planning.

The rapid urbanization and industrialization of suburban regions have led to the creation of sprawling industrial zones, often resulting in the inefficient utilization of land. One of the primary problems lies in the insufficient planning of suburban areas, where considerable portions of land remain unused. To address this, there is a critical need for strategic planning that minimizes unused areas, fostering a more sustainable and efficient distribution of land resources.

The influx of new residents into these suburban zones brings both opportunities and challenges. While innovative concepts are introduced, such as repurposing rural areas to accommodate elderly farmers or exploring diverse uses of flora from various subzones, there is a simultaneous risk of overlooking the importance of maintaining biodiversity. The shift from traditional farming methods to an industrial agricultural approach, centered around monocultural production, has not only reduced biodiversity but has also escalated the usage of harmful pesticides, herbicides, and fungicides, posing environmental and health concerns.

Moreover, the introduction of new species from an urban background rather than rural roots has further complicated the ecological balance. This shift not only disrupts the local ecosystems but also alters the historical composition of parks and green spaces. The once harmonious blend of native flora is often replaced by unfamiliar species, diminishing the ecological integrity and cultural significance of these areas.

In the face of these challenges, effective land use planning must prioritize sustainable practices that balance the needs of urban development with environmental preservation. This includes encouraging diversified and eco-friendly farming practices, implementing strict regulations on the usage of harmful chemicals, and safeguarding historical compositions in parks.



"The European Commission's support for the production of this publication does not constitute an endorsement of the contents, which reflect the views only of the authors, and the Commission cannot be held responsible for any use which may be made of the information contained therein."

2021-2-TR01-KA210-YOU-000050325



Co-funded by the  
Erasmus+ Programme  
of the European Union

## INNOVATIVE SOLUTIONS FOR SUSTAINABLE LANDSCAPE DESIGN AND COMMUNITY INVOLVEMENT

Addressing the challenges posed by urban sprawl and its impact on suburban areas requires a multifaceted approach that not only leverages the technical expertise of landscape architecture but also actively involves the community. Here are enriched solutions aimed at fostering sustainable development and enhancing community engagement:

### Building Community Connections:

Foster collaboration by establishing strong connections between students, parents, and the local community. This can be achieved through educational programs, workshops, and community events that raise awareness about the importance of sustainable landscape design.

### Promoting Biodiversity Through Rural Species:

Introduce a variety of rural species into landscape designs, creating vibrant rural gardens and parks that celebrate the unique flora of the area. This not only enhances biodiversity but also reconnects residents with the natural beauty of their surroundings.

### Community Brainstorming and Decision-Making:

Initiate group meetings that bring together diverse perspectives from the community. Encourage residents to actively participate in brainstorming sessions, collectively generating ideas and prioritizing those that hold the greatest societal importance. This collaborative approach ensures that community needs and values are integral to the decision-making process.

### Cultivating a YIMBY Culture:

Shift public opinion from NIMBY to YIMBY by fostering transparency and participatory decision-making. Communicate openly about proposed changes, involving residents in the decision-making process and emphasizing the positive impact on their immediate surroundings.

### Holistic Landscape Planning:

Emphasize the complexity of landscape design, recognizing that it extends beyond technical aspects. At the planning stage, ensure a thorough understanding of political, economic, and environmental dimensions. Addressing these aspects early in the planning process lays the foundation for comprehensive and sustainable landscape solutions.



"The European Commission's support for the production of this publication does not constitute an endorsement of the contents, which reflect the views only of the authors, and the Commission cannot be held responsible for any use which may be made of the information contained therein."

2021-2-TR01-KA210-YOU-000050325



Co-funded by the  
Erasmus+ Programme  
of the European Union

#### Preserving Heritage and Historical Parks:

Maintain the memory of heritage by undertaking the careful recomposition and renovation of historical parks in accordance with their original plans and traditional styles. This not only preserves the cultural identity of the area but also creates a sense of continuity between the past and present.

#### Natural Plant Protection Systems:

Encourage the usage of natural plant protection systems as an alternative to chemical interventions. This sustainable approach not only safeguards the environment but also contributes to the health of ecosystems and the well-being of local communities.

#### Avoiding Mass Tourism in Rural Areas:

Exercise caution in using rural areas as territories for mass tourism. Implement policies that prioritize the preservation of rural landscapes, ensuring that any tourism initiatives are sustainable, respectful of local ecosystems, and considerate of the needs and preferences of the residents.

2021-2-TR01-KA210-YOU-000050325



"The European Commission's support for the production of this publication does not constitute an endorsement of the contents, which reflect the views only of the authors, and the Commission cannot be held responsible for any use which may be made of the information contained therein."



Co-funded by the  
Erasmus+ Programme  
of the European Union



# TOURISM

2021-2-TR01-KA210-YOU-0000050325



"The European Commission's support for the production of this publication does not constitute an endorsement of the contents, which reflect the views only of the authors, and the Commission cannot be held responsible for any use which may be made of the information contained therein."





Co-funded by the  
Erasmus+ Programme  
of the European Union

## Analysis of Challenges in Tourism Development:

### 1. Financial Engagement of Local Population:

- **Economic Empowerment:** Introduce financial incentives and revenue-sharing models that directly benefit local communities. This can include profit-sharing from tourism-related activities and investments in local businesses.
- **Entrepreneurship Opportunities:** Facilitate entrepreneurial ventures within the community, encouraging locals to establish businesses catering to the tourism sector. Financial support, training, and mentorship programs can foster local entrepreneurship.

### 2. Personal and Communal Motivation:

- **Community-Based Decision-Making:** Promote community involvement in decision-making processes related to tourism. Establish communal committees or councils that actively participate in planning and managing tourism activities.
- **Cultural Ownership:** Emphasize the cultural significance of tourism, connecting it to the community's identity. Encourage a sense of ownership among locals by showcasing how tourism can contribute positively to their way of life.

### 3. Maintaining Respect and Relationship to Tradition:

- **Cultural Heritage Conservation:** Implement measures to preserve and celebrate local traditions. Develop cultural events, festivals, and workshops that engage both locals and visitors in the rich cultural heritage of the community.
- **Traditional Skills Enhancement:** Support initiatives that aim to enhance traditional skills and crafts, creating opportunities for locals to actively participate in showcasing and passing down cultural practices.

### 4. Honoring History:

- **Heritage Interpretation Programs:** Introduce educational programs that interpret and narrate the historical significance of the community. This could involve guided tours, storytelling sessions, and multimedia presentations.
- **Historical Preservation Initiatives:** Invest in the preservation of historical sites and landmarks. This can be achieved through collaborations with historians, architects, and preservation experts to ensure the authentic representation of history.

### 5. Raising Local Interest in Public Affairs:

- **Public Awareness Campaigns:** Launch awareness campaigns that highlight the benefits of tourism to the community. Showcase success stories of other regions that have effectively balanced tourism with local interests and development.
- **Educational Initiatives:** Implement educational programs in local schools and community centers that emphasize the positive impacts of tourism. Foster a sense of pride in the community's role as a tourist destination.



"The European Commission's support for the production of this publication does not constitute an endorsement of the contents, which reflect the views only of the authors, and the Commission cannot be held responsible for any use which may be made of the information contained therein."

2021-2-TR01-KA210-YOU-000050325



Co-funded by the  
Erasmus+ Programme  
of the European Union

## SOLUTIONS

Methods and Procedures for Community-Driven Tourism Development:

### 1. Consensus-Building Strategies:

- Community Consultations:
  - Inclusive Decision-Making: Organize town hall meetings, focus groups, and surveys to ensure broad community participation. Gather input on development strategies, allowing residents to voice concerns, suggestions, and preferences.
- Consensus Workshops:
  - Facilitated Workshops: Conduct facilitated workshops to bring diverse community members together. Engage in collaborative discussions to identify common goals and aspirations for tourism development.
- Community Representatives:
  - Appoint Community Representatives: Designate representatives from different segments of the community to participate in development discussions. This ensures a diverse range of perspectives and prevents the dominance of a few voices.

### 2. Tangible Benefits for the Community:

- Economic Empowerment Programs:
  - Job Creation Initiatives: Develop tourism-related job creation programs that prioritize hiring locally. This can include training programs, apprenticeships, and partnerships with local businesses.
- Community Investment Funds:
  - Establish Community Funds: Allocate a portion of tourism revenue to community funds. These funds can be used for local infrastructure projects, educational initiatives, or other community-driven development goals.
- Skills Development Programs:
  - Skill Enhancement Initiatives: Invest in skill development programs that empower community members to actively participate in tourism-related activities. This could involve training in hospitality, guiding, and cultural preservation.



"The European Commission's support for the production of this publication does not constitute an endorsement of the contents, which reflect the views only of the authors, and the Commission cannot be held responsible for any use which may be made of the information contained therein."

2021-2-TR01-KA210-YOU-000050325



Co-funded by the  
Erasmus+ Programme  
of the European Union

### 3. Activation of Community Abilities and Skills:

- Cultural Showcasing Initiatives:
  - Crafts and Traditions Exhibitions: Organize events and exhibitions that showcase local crafts, traditions, and unique aspects of the community. This not only attracts tourists but also instills a sense of pride among locals.
- Community-Led Tours:
  - Locally Guided Tours: Train and empower local residents to become guides for tourist activities. This not only provides an authentic experience for visitors but also allows the community to share its unique stories.
- Community Storytelling Platforms:
  - Digital Storytelling Initiatives: Create digital platforms or exhibits where community members can share their stories, traditions, and experiences. This can be a website, a local museum, or interactive displays within the community.

### 4. Fostering Uniqueness and Originality:

- Cultural Preservation Projects:
  - Support for Cultural Projects: Provide financial and logistical support for projects that focus on preserving and promoting local culture. This could include festivals, art installations, and cultural exchange programs.
- Community Tourism Workshops:
  - Workshops on Uniqueness: Conduct workshops that empower the community to identify and highlight its unique aspects. This could involve storytelling, creative expression, and collaborative projects that celebrate local identity.
- Promotional Campaigns:
  - Highlighting Local Uniqueness: Develop promotional campaigns that emphasize the distinctiveness of the community. Use marketing materials, social media, and tourism websites to showcase what makes the community special.

By implementing these methods and procedures, community-driven tourism development can go beyond mere infrastructure projects and truly empower the community to actively shape and benefit from the tourism initiatives in their region.

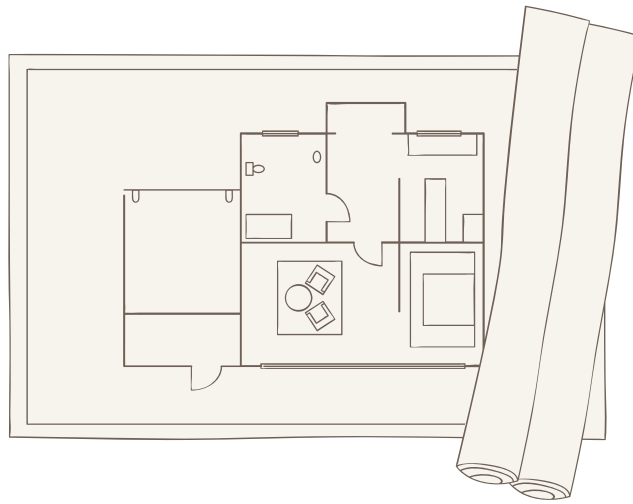


"The European Commission's support for the production of this publication does not constitute an endorsement of the contents, which reflect the views only of the authors, and the Commission cannot be held responsible for any use which may be made of the information contained therein."

2021-2-TR01-KA210-YOU-000050325



Co-funded by the  
Erasmus+ Programme  
of the European Union



# ARCHITECTURE

2021-2-TR01-KA210-YOU-000050325



"The European Commission's support for the production of this publication does not constitute an endorsement of the contents, which reflect the views only of the authors, and the Commission cannot be held responsible for any use which may be made of the information contained therein."



Co-funded by the  
Erasmus+ Programme  
of the European Union

## CURRENT SITUATION ANALYSIS

In the intricate task of restoring architectural heritage in rural areas, a nuanced and meticulous approach is paramount. The overarching goal is to preserve the essence of old buildings while concurrently enhancing functionality and aesthetic appeal. The current analysis identifies key considerations that underscore the significance of thoughtful restoration processes in the context of cultural heritage preservation.

### Preserving Essence and Enhancing Functionality:

The restoration of architectural heritage demands a delicate balance between preserving the intrinsic qualities of old buildings and introducing enhancements that improve their functionality. This requires a thoughtful approach that considers the historical significance of each structure while addressing contemporary needs. The result should be a harmonious blend of the old and the new, ensuring that the architectural heritage not only survives but thrives in relevance.

### Addressing Lack of Information and Awareness:

A critical aspect of successful preservation efforts lies in addressing the lack of information and awareness about protection laws related to historical buildings within local communities. Educating residents about these laws is pivotal to fostering a sense of responsibility and ownership, ensuring that the community actively participates in the preservation process. Community engagement becomes a cornerstone for sustainable heritage conservation.

### Preserving Visual Integrity:

The visual integrity of streets, buildings, and the overall landscape plays a pivotal role in maintaining the authenticity and harmony of a historical area. During restoration projects, it is imperative to safeguard the visual coherence of the surroundings. This involves meticulous attention to architectural details, materials, and the overall design language to ensure that the restored structures seamlessly integrate into the historical fabric of the area.



"The European Commission's support for the production of this publication does not constitute an endorsement of the contents, which reflect the views only of the authors, and the Commission cannot be held responsible for any use which may be made of the information contained therein."

2021-2-TR01-KA210-YOU-000050325



Co-funded by the  
Erasmus+ Programme  
of the European Union

## IDENTIFICATION OF THE PROBLEM: NAVIGATING CHALLENGES IN RESTORING ARCHITECTURAL HERITAGE IN RURAL AREAS

The restoration of architectural heritage in rural areas presents a multifaceted challenge that requires a meticulous and thoughtful approach. Central to this endeavor is the dual objective of preserving the essence of old buildings while simultaneously enhancing their functionality and aesthetic appeal. The identification of key challenges underscores the complexities inherent in cultural heritage preservation.

### Preserving Essence while Enhancing Functionality:

The primary challenge in restoring architectural heritage lies in the delicate balance between preserving the inherent qualities of old buildings and introducing enhancements to improve their functionality. This nuanced process necessitates a meticulous approach to ensure that historical significance is retained while adapting structures to meet contemporary needs. The challenge is to seamlessly integrate the old with the new, fostering a harmonious coexistence that respects the past and embraces the present.

### Addressing Lack of Information and Awareness:

A critical hurdle in the restoration journey is the pervasive lack of information and awareness about protection laws governing historical buildings within local communities. This informational gap poses a direct threat to the successful preservation of cultural heritage. To overcome this challenge, initiatives are needed to educate and empower residents, fostering a collective understanding of the importance of protecting and preserving the architectural legacy of their communities.

2021-2-TR01-KA210-YOU-000050325



"The European Commission's support for the production of this publication does not constitute an endorsement of the contents, which reflect the views only of the authors, and the Commission cannot be held responsible for any use which may be made of the information contained therein."



Co-funded by the  
Erasmus+ Programme  
of the European Union

## Solution Proposals for Architectural Restorations in Rural Areas:

### Historical Research:

Enriching the restoration process begins with an exhaustive exploration of historical contexts. Engage in meticulous historical research to delve into the original design, construction techniques, and the broader historical milieu of the building. This comprehensive understanding forms the bedrock for the restoration journey, facilitating informed decision-making and ensuring that the project aligns authentically with its heritage.

### Preservation of Original Features:

Elevate the restoration endeavor by meticulously identifying and safeguarding the original architectural features that embody the unique character of the building. Windows, doors, decorative elements, and structural components carry the essence of the structure's history. Prioritize the preservation of these elements, opting for repair and restoration over replacement whenever possible. This approach not only maintains authenticity but also fosters a tangible connection to the past.

### Use of Traditional Materials:

Infuse authenticity into the restoration process by opting for the use of traditional construction materials indigenous to the region. Embrace the legacy of craftsmanship embedded in these materials, ensuring a seamless integration with the surrounding environment. By incorporating time-honored materials, the restored structure not only reflects historical accuracy but also harmonizes with the cultural and natural landscape.

### Community Engagement:

Extend the restoration process beyond technical considerations by actively involving the local community. Seek their insights, knowledge, and experiences related to the building. By fostering community engagement, the restoration becomes a collective endeavor, instilling a sense of pride and ownership within the community. This collaborative approach ensures that the restored building resonates with the values and aspirations of the people it serves.



"The European Commission's support for the production of this publication does not constitute an endorsement of the contents, which reflect the views only of the authors, and the Commission cannot be held responsible for any use which may be made of the information contained therein."

2021-2-TR01-KA210-YOU-000050325



Co-funded by the  
Erasmus+ Programme  
of the European Union



# ACCESSIBILITY

2021-2-TR01-KA210-YOU-000050325



"The European Commission's support for the production of this publication does not constitute an endorsement of the contents, which reflect the views only of the authors, and the Commission cannot be held responsible for any use which may be made of the information contained therein."





Co-funded by the  
Erasmus+ Programme  
of the European Union

## ACCESSIBILITY IN RURAL AREAS

Embarking on the journey to enhance accessibility for disadvantaged or marginalized populations in the revitalization of historical buildings in rural areas illuminates a host of challenges. These challenges, rooted in the unique characteristics and preservation concerns intrinsic to historical buildings, necessitate a nuanced approach. When considering accessibility for disadvantaged or marginalized populations in the renovation of historical buildings in rural areas, several challenges emerge. Historical buildings often come with unique characteristics and preservation concerns that need to be carefully balanced with the goal of achieving accessibility. Here are the key problems and challenges encountered:

**Preservation vs. Accessibility Harmony:** The inherent conflict between preserving historical integrity and introducing necessary accessibility modifications presents a complex dynamic. Achieving the delicate equilibrium required to preserve both the historical essence and promote inclusivity is a crucial challenge. Striking this balance ensures that the accessibility modifications seamlessly integrate with the intrinsic heritage value of the building.

**Structural Limitations and Innovative Solutions:** Historical buildings often bear structural limitations that pose formidable obstacles to achieving full accessibility. Navigating these constraints while preserving the historical character demands innovative solutions. The process involves a creative blend of engineering ingenuity and preservation sensitivity to ensure that accessibility enhancements harmonize with the original structure.

**Compliance with Preservation Guidelines:** The compliance with stringent preservation guidelines and regulations introduces a layer of complexity to accessibility integration. Meeting the requirements of both accessibility and preservation standards requires meticulous planning and a deep understanding of the historical context. This challenge underscores the need for solutions that seamlessly marry inclusivity with the preservation of historical authenticity.



"The European Commission's support for the production of this publication does not constitute an endorsement of the contents, which reflect the views only of the authors, and the Commission cannot be held responsible for any use which may be made of the information contained therein."

2021-2-TR01-KA210-YOU-000050325



Co-funded by the  
Erasmus+ Programme  
of the European Union

## Detailed Exploration of Solutions for Making Historical Buildings Accessible in Rural Areas:

### Preservation-Friendly Accessibility Design:

#### 1. Hidden Ramps and Lifts:

- Solution: Designing hidden ramps or lifts that blend seamlessly with the historical architecture.
- Architectural Integration: Concealing accessibility features within the building's structure ensures a preservation-friendly approach that minimizes visual impact.

#### 2. Interior Lifts:

- Solution: Introducing interior lifts that provide accessibility without altering the building's exterior.
- Preservation Harmony: Ensures that accessibility solutions are discreet, preserving the historical exterior while meeting inclusivity needs.

#### 3. Platform Lifts:

- Solution: Implementing platform lifts that can be discreetly positioned within the building.
- Spatial Optimization: Choosing solutions that optimize space while maintaining the historical integrity of the structure.

#### 4. Architectural Collaboration:

- Solution: Collaborating with architects and accessibility experts for custom solutions.
- Inclusive Design Principles: Ensures that accessibility features are designed in harmony with the historical aesthetics, prioritizing inclusivity without compromising architectural integrity.

#### 5. Material Compatibility:

- Solution: Using materials that are compatible with the historical fabric for the construction of ramps or lifts.
- Aesthetic Consistency: Ensures that the materials chosen for accessibility features align with the original building materials, maintaining aesthetic consistency.



"The European Commission's support for the production of this publication does not constitute an endorsement of the contents, which reflect the views only of the authors, and the Commission cannot be held responsible for any use which may be made of the information contained therein."

2021-2-TR01-KA210-YOU-000050325



Co-funded by the  
Erasmus+ Programme  
of the European Union



# NON-GOVERNMENTAL

2021-2-TR01-KA210-YOU-0000050325



"The European Commission's support for the production of this publication does not constitute an endorsement of the contents, which reflect the views only of the authors, and the Commission cannot be held responsible for any use which may be made of the information contained therein."



Co-funded by the  
Erasmus+ Programme  
of the European Union

## CURRENT SITUATION ANALYSIS

### Lack of Sufficient Support from Local Governments and Academia:

One prevailing issue is the inadequate support from local governments and academia. The appreciation and understanding of the significance of landscape architecture often face hurdles in both regions, limiting the resources and recognition extended to this vital discipline. To overcome this, fostering stronger ties between practitioners, policymakers, and academic institutions is imperative. Advocacy efforts can emphasize the societal benefits of well-designed landscapes, prompting increased support from governmental and educational entities.

### Insufficient Budget of Non-Governmental Organizations:

Non-governmental organizations (NGOs) play a pivotal role in driving positive change in the realm of landscape architecture. However, a common challenge faced in Poland and Turkey is the limitation of financial resources available to these organizations. To address this, strategic partnerships with governmental bodies, private enterprises, and international organizations can be explored. By diversifying funding sources and promoting the societal impact of NGO initiatives, it is possible to bolster the financial sustainability of these crucial entities.

### Lack of Cooperation with Local Communities:

Successful landscape architecture inherently relies on a collaborative approach that involves the active participation of local communities. Unfortunately, both Poland and Turkey grapple with a deficiency in cooperative engagement. Efforts should be directed towards fostering inclusive practices that empower communities in the decision-making processes related to landscape design. Establishing communication channels, conducting community workshops, and ensuring transparency in project development are key steps to bridge this gap.



"The European Commission's support for the production of this publication does not constitute an endorsement of the contents, which reflect the views only of the authors, and the Commission cannot be held responsible for any use which may be made of the information contained therein."



Co-funded by the  
Erasmus+ Programme  
of the European Union

## SOLUTION PROPOSALS: ELEVATING RURAL DEVELOPMENT THROUGH STRATEGIC INITIATIVES

In response to the intricate challenges faced by rural areas, a comprehensive set of solution proposals emerges, driven by the collective efforts of governmental bodies, NGOs, and the wider community. These proposals aim to empower rural communities, preserve their identity, and foster sustainable development.

### Government or EU Supported Projects for NGOs:

Championing rural development requires the collaboration of NGOs with government or EU-supported projects. By facilitating partnerships, governments can provide funding and resources to bolster the initiatives of NGOs focused on rural issues. This collaborative approach ensures a more substantial impact, allowing NGOs to implement projects that address economic, cultural, and educational disparities effectively.

### Visibility Enhancement through Institutional Engagement:

Increasing the visibility of NGOs is paramount to garnering support and awareness. Sending representatives to institutions offers a strategic avenue to showcase the crucial work undertaken by NGOs in rural areas. By actively participating in relevant forums and engaging with policymakers, NGOs can advocate for rural development and garner support for their initiatives.

### Needs Analysis Aligned with Local Structures:

Conducting a thorough needs analysis is fundamental to crafting tailored solutions. This analysis should encompass economic, social, and democratic structures unique to each local community. Recognizing the diverse needs of rural areas ensures that interventions are contextually relevant and can effectively address the root causes of challenges.

### Inclusive Awareness-Raising and Mobilizing Activities:

To engender sustainable change, it is imperative to involve local people in the process. Organizing disseminating activities, awareness campaigns, and mobilizing initiatives ensure that the community becomes an active participant in its own development. This inclusive approach fosters a sense of ownership and commitment to positive change.



"The European Commission's support for the production of this publication does not constitute an endorsement of the contents, which reflect the views only of the authors, and the Commission cannot be held responsible for any use which may be made of the information contained therein."

2021-2-TR01-KA210-YOU-000050325



Co-funded by the  
Erasmus+ Programme  
of the European Union



# LOCAL GOVERNANCE

2021-2-TR01-KA210-YOU-000050325



"The European Commission's support for the production of this publication does not constitute an endorsement of the contents, which reflect the views only of the authors, and the Commission cannot be held responsible for any use which may be made of the information contained therein."



Co-funded by the  
Erasmus+ Programme  
of the European Union

## CURRENT SITUATION ANALYSIS: NAVIGATING THE COMPLEXITIES OF HISTORICAL BUILDING RENOVATION

The current landscape of historical building renovation is marked by intricate challenges that require a nuanced understanding of governance, regulatory frameworks, and resource allocation at various levels.

### Crucial Role of Local Governance:

The renovation of historical buildings hinges significantly on the role of local governance, encompassing decision-making, planning, and regulatory processes. Local authorities serve as pivotal actors in shaping the preservation landscape, influencing the fate of historical structures through strategic governance and policy implementation.

### Regulatory Complexity:

The regulatory landscape surrounding historical preservation is intricate, with variations at local, regional, and national levels. Local authorities find themselves navigating a complex web of preservation laws, each with its nuances and intricacies. Achieving effective compliance requires a profound understanding of these regulations, adding a layer of challenge to the preservation process.

### Inadequate Preservation Policies:

In some instances, localities may lack comprehensive preservation policies, leading to a dearth of clear guidelines for historical building renovations. The absence of robust policies can result in inconsistent decision-making, creating ambiguity in the treatment of historical structures. The need for cohesive and well-defined preservation policies becomes evident in ensuring a standardized and principled approach to renovation efforts.

### Limited Resources and Funding:

Financial constraints frequently pose significant hurdles for local governments engaged in historical building renovations. The limited availability of financial resources, coupled with competing municipal priorities, creates a challenging environment for securing funding dedicated to preservation projects. Striking a balance between budgetary constraints and the imperative to preserve historical heritage remains an ongoing challenge for local authorities.



"The European Commission's support for the production of this publication does not constitute an endorsement of the contents, which reflect the views only of the authors, and the Commission cannot be held responsible for any use which may be made of the information contained therein."

2021-2-TR01-KA210-YOU-000050325



Co-funded by the  
Erasmus+ Programme  
of the European Union

## SOLUTION PROPOSALS: FOSTERING HOLISTIC HISTORICAL RENOVATION

In navigating the intricate landscape of historical renovation, a set of proactive and comprehensive solution proposals emerges, designed to address the multifaceted challenges faced by local governments. These proposals advocate for inter-departmental collaboration, transparent planning, long-term maintenance strategies, and the integration of historical preservation into local economic development.

### Inter-Departmental Coordination:

To ensure a seamless and holistic approach to historical renovation projects, local governments should establish mechanisms for effective coordination among various government departments involved in preservation efforts. Encouraging collaboration and open communication facilitates a unified strategy, enabling a more comprehensive understanding of the diverse factors influencing historical building preservation.

### Transparent Zoning and Land Use Planning:

Develop transparent zoning and land use plans that prioritize the preservation of historical buildings. These plans should articulate clear guidelines for adapting these structures to modern uses while safeguarding their cultural and architectural significance. Transparent planning ensures that the community, stakeholders, and decision-makers have a shared understanding of the vision for historical preservation.

### Long-Term Maintenance Plans:

Recognizing the importance of ongoing care, local governments should formulate and implement long-term maintenance plans for historical buildings. Allocating dedicated funds for routine maintenance and establishing partnerships with local communities, businesses, or heritage organizations ensures that these structures are consistently and sustainably preserved for future generations.

### Local Economic Development Strategies:

Integrate historical preservation into local economic development strategies, emphasizing the economic benefits derived from preserving historical buildings. Highlight the potential for increased tourism, job creation, and elevated property values as compelling incentives for preserving cultural heritage. By aligning preservation efforts with economic development, local governments can garner support and resources for sustained historical renovation.



"The European Commission's support for the production of this publication does not constitute an endorsement of the contents, which reflect the views only of the authors, and the Commission cannot be held responsible for any use which may be made of the information contained therein."

2021-2-TR01-KA210-YOU-000050325





Co-funded by the Erasmus+ Programme of the European Union

# Event Poster



Co-funded by the Erasmus+ Programme of the European Union

## RERURAL

### INTERNATIONAL FOCUS GROUP WORKS

20-24 November 2023  
Eskişehir, Türkiye

2021-2-TR01-KA210-YOU-000050325



Deadline for application:  
15 November 2023  
<https://forms.gle/DD4RoxjfbdxCeNA88>

#### Renovation Models for Rural Tourism Destinations with Youth



"The European Commission's support for the production of this publication does not constitute an endorsement of the contents, which reflect the views only of the authors, and the Commission cannot be held responsible for any use which may be made of the information contained therein."



"The European Commission's support for the production of this publication does not constitute an endorsement of the contents, which reflect the views only of the authors, and the Commission cannot be held responsible for any use which may be made of the information contained therein."

2021-2-TR01-KA210-YOU-000050325